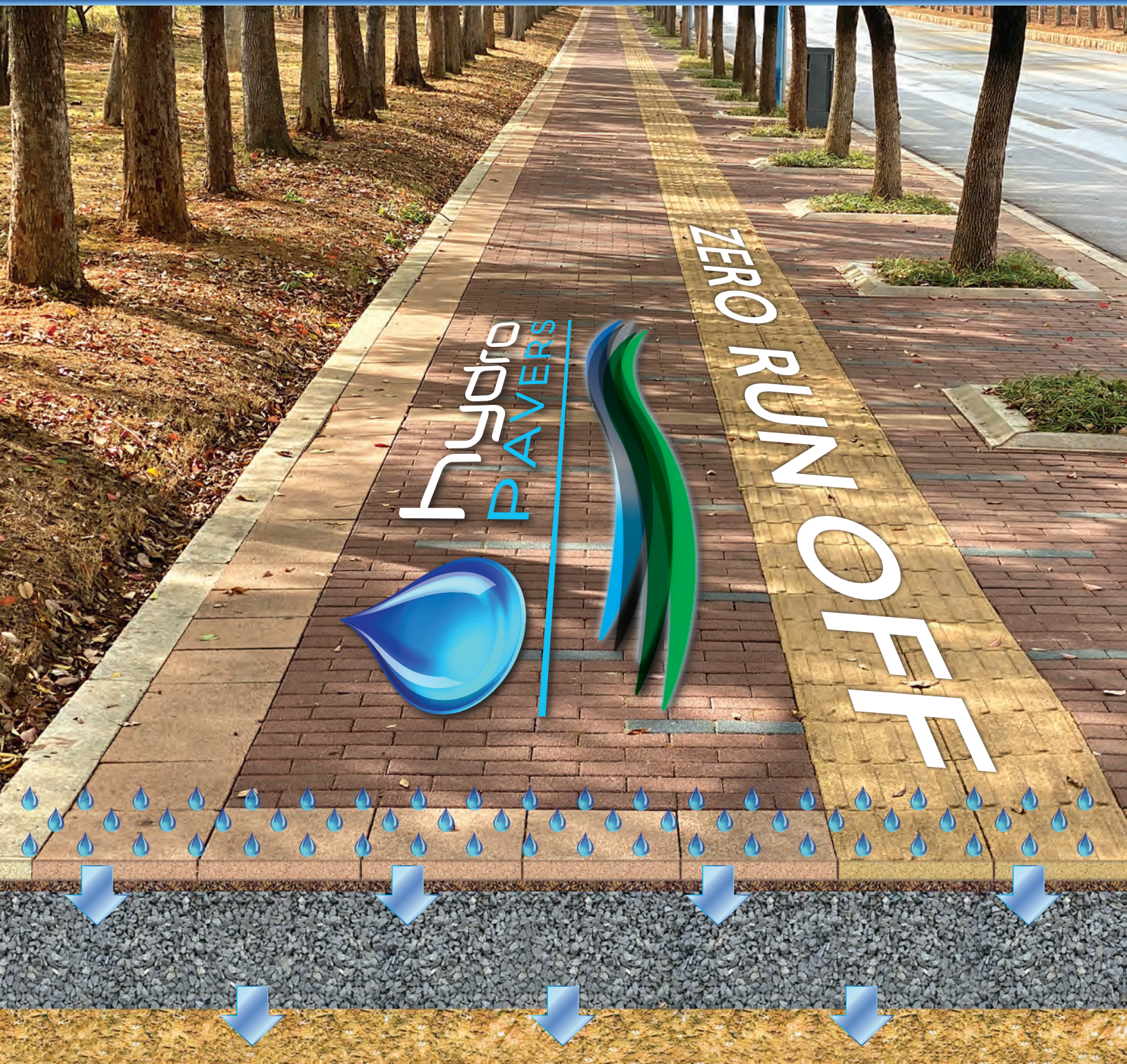




STORM WATER MANAGEMENT SOLUTIONS

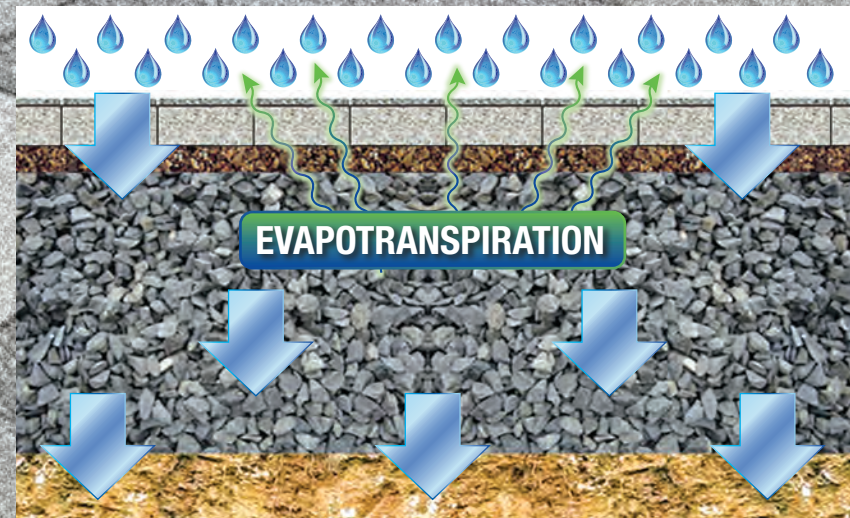
COMBINING WATER RETENTION AND DRAINAGE
IN A REVOLUTIONARY BEAUTIFUL PAVER





hydroPAVERS® The Ideal Storm Water Solution

Combining Water Retention and Drainage in a Revolutionary Beautiful Paver.



Our **hydroPAVERS®** work by absorbing a ¼" rain event into the paver, then as the paver becomes saturated, the remaining water drains into the aggregate bedding and base layers, at the rate of 1½" of water per minute.



Our **hydroPAVERS®** are ideal for public parks, amusement parks and virtually any outdoor areas where people walk or park vehicles.



hydroPAVERS® keep areas dryer even during heavy rains. Once the rain stops, you will be able to resume your activities without waiting for the puddles to disappear.

Using our **hydroPAVERS®** will avoid paths that require you to jump over or walk through puddles. Also eliminate the safety risks with our skid resistant **hydroPAVERS®**



As the water washes over hard surfaces, it can take debris and pollutants along with it straight into our sewer systems. This put addition strain on our water treatment plants, and in certain conditions, can lead to flooding.

Our **hydroPAVERS®** are an excellent solution for reducing, filtering and delaying stormwater runoff in applications ranging from walk-ways, alleyways, parking areas, courtyards and parks. Suitable for all new commercial, municipal and residential projects in addition to replacement, resurfacing and upgrading non pervious areas.

Our **hydroPAVERS®** satisfy Low Impact Development requirements, reduce heat island effect and absorb noise.



NOT Slippery When Wet



hydroPAVERS® are available in a variety of colours, shapes and sizes, which have been designed to suit all paving, landscaping, construction and design needs.





STORM WATER MANAGEMENT SOLUTIONS

Many additional reasons to design and implement **hydroPAVERS®**

✓ True Pervious Paver

- Every square inch of the surface allows water to flow in.
- Absorbs a ¼" rain event – excellent storm water retention.
- After fully saturated, rain water passes through our hydroPAVERS® into the properly prepared base.
- Exceeds 100 year storm requirements for retention and drainage in most geographical areas.
- Properly prepared base and leveling layer along with our hydroPAVERS® can hold over 5 inches of water.
- The entire area under our pavers acts like a water storage tank during heavy surges and severe rain events.
- Dryer surfaces. The water will evaporate – Evapotranspiration. By the sun and wind.
- The system allows water retention, water infiltration and transmissivity.
- The base layers allows the excess water to flow back to the water table.
- Puddles are eliminated assuming full proper installation. – except extreme conditions such as flooding due to other factors such as hurricanes.

✓ No Large Gaps

- The space between pavers is less than 1/8" regardless of paver size in the plans.
- Makes it Safe – complies with ADA and AODA.
- Since gaps can be filled with polymeric sand, the system is effectively sealed off.
- Dirt does not flow in and clog the system or get into the base.
- Reduced maintenance costs: only pressure washing required.
- No vacuuming required ever.

✓ Heat Island Effect

- Surface is cooler due to Evapotranspiration and also because the paver "breathe".
- SRI Index 41 for the Off-White.

✓ Safety

- Non slip surface.
- Excellent around swimming pools and safe for children to run on.
- No sliding on the surface when wet, even when barefoot.

✓ Bonus Features:

- With 8 colors and 9 sizes, super design flexibility
- Off-white or Sand colored hydroPAVERS® can used for lines in parking areas to eliminate painting.
- Reduce painting even further by using for handicap zones. – no slipping / no painting.
- NEVER needs to be sealed – save cost annually (sealing will ruin the drainage and the benefits)
- Compared to concrete, no expansion joints required.

✓ Color Fast

- Manufactured and oven cured, color in baked in.
- This is achieved by 12 hours at 1,200 Degrees Centigrade through a 1,500 foot long oven.
- Will not fade over time – Not effected by UV rays.

✓ Strength

- Compressive strength exceeds 9,500 PSI.
- Ideal for so many applications.
- Walkways, Lanes, Minor Low Traffic Roads, Sidewalks, Parking Pads, Parking Lots.

✓ Material: Slithered Ceramic

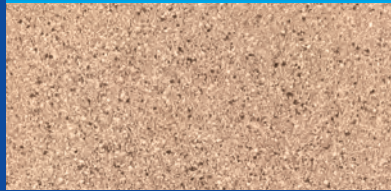
- 100% recycled ceramic tiles. Post- Industrial.
- Using broken and rejected tiles diverted directly from ceramic tile manufacturers.
- Cuts very clean with diamond blade.
- Freeze Thaw tested and certified.

✓ Freeze Thaw tested and certified

- Does not crack, expand or contract from extreme cold or heat.



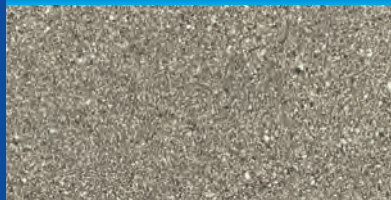
OFF WHITE—002A



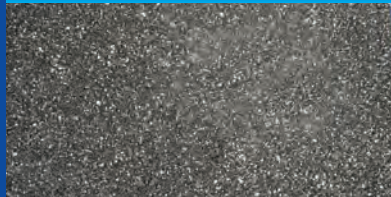
BROWN—006



COFFEE—020



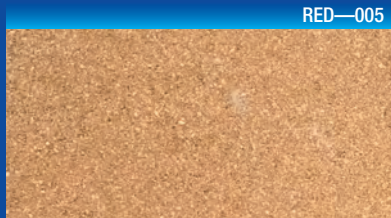
DARK GREY—003



CHARCOAL—004



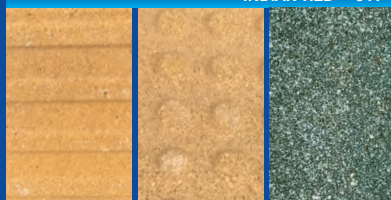
RED—005



SAND—009B



INDIAN RED—017



TACTILE—Various Colours

BLUE—012

hydroPAVERS®*

* hydroPAVERS ® is a registered trademark
of Green Innovations Ltd., Canada

USA/Canada: 888 599 6444

International: +1 416 725 7524

hydroPAVERS@ hydroPAVERS.ca