

# hydroPAVERS® Maintenance Guild / Cleaning

## Maintenance Of Our hydroPAVERS®

### GENERAL

hydroPAVERS® are a very unique paver, constructed using recycled ceramic material along with other proprietary ingredients. The physical structure is of a hexagon / honeycomb type of shape, which guarantees its compressive strength and water permeability properties. With smaller granules on the top portion of the pavers and larger granules on the bottom, a pyramid shape structure is formed. The top's smaller granules prevent dirt penetrating into the pavers, while the larger on the bottom allows the water to penetrate and dissipate quickly.

### Snow Removal

Snow removal should be done with equipment that has the neoprene rubber on the blades. Do not use scrapers that are just steel, as any paver surface could sustain scarring marks from such a blade.

### Painting / Lines

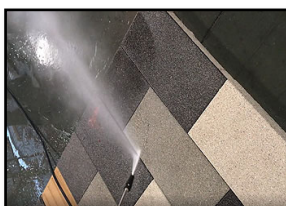
Painting should be avoided if possible, since this will seal the paver tops making them non-pervious.

### Do Not Apply Sealers

This also makes the pavers non-pervious and defeats the functionality of the unique design.

Lines, Handicap areas, and other required markings.

With a wide variety of colors, it is possible to design and plan the areas using hydroPAVERS® for the marking. This feature eliminates the initial painting and then the constant repainting maintenance costs. This is achieved due to the way our hydroPAVERS® are manufactured and fired in a 1,200° kiln for 12 hours, which guarantees the strong compressive strength, hard texture and assures the colour will not fade.



### Cleaning Details And Methods For A Variety Of Factors

When the surface has dust or dirt on it, it should be washed with a high-pressure water system to keep it clean.

Typically cleaning with pressure water should be done annually, or as required. After the winter and snow melts would also be a time to assure the top surface is relatively free from dirt again with the power wash method.

**Animal Dung**  
If pressure washing & water does not remove completely, add detergent.



**Chewing Gum**  
Sprinkle salt and water on the chewing gum, so that it hardens/freezes, then gently scrape off



**Grease, Oil, Asphalt**  
Use ketone, ethyl keytone, toluene thinner to remove. Wipe and dry clean



**Water Stains, Sludge**  
If pressure washing & water does not remove completely, use diluted muriatic acid and then rinse clean

**Rust**  
Use oxalic acid as a cleaning solvent to remove rust stains



**Grit**  
If pressure washing & water does not remove completely, wash clean with a broom, then use 0.5% solution of sodium phosphate and then rinse clean



**Latex Paint, Coating**  
Use a neutral detergent or strong acid as a detergent and then rinse clean

